

**FEATURES**

- Meet DOE level VI and EU tier 1 Efficiency requirements
- 3-pole IEC320-C14 AC inlet
- Build-in 40x40x10mm DC fan with fan speed control
- Touch current : < 190uA @264VAC
- Altitude during operation: up to 3000m.
- No load Power consumption < 210mW
- 3 year warranty



**ELECTRICAL SPECIFICATIONS**

- Input range : 90 - 264VAC
- Frequency : 47 - 63Hz
- Power Factor : > 0.95 @115VAC; > 0.90 @230VAC @full load
- Inrush current : < 65A peak @115VAC; < 130A peak @230VAC cold start @25°C
- Input current (rms) : 3.5A @90VAC; 1.75A @264VAC max.
- Efficiency : > 88% @average load, 115/230VAC
- Maximum output power (Po) : 250Watts
- Hold-up time : > 16ms typical @full load, 115VAC
- Short Circuit Protection: Auto-recovery
- Over Load Protection: Auto-recovery
- Over Voltage Protection: Shutdown and latch off, AC recycle

**RoHS Compliant**

Dimension : L188.5 x W104.5 x H60 mm ( 7.42" x 4.1" x 2.36" )  
Weight : 1.05 kgs. ( 2.31 lbs. )

**SAFETY STANDARDS**

- UL 60950-1
- UL 62368-1
- CSA C22.2-No.60950-1
- CSA C22.2-No.62368-1
- TUV EN60950-1
- TUV EN62368-1
- CB IEC 60950-1
- CB IEC 62368-1

**EMC STANDARDS**

- FCC Class B
- CISPR22 Class B
- EN 55032 Class B
- CE

**ENVIRONMENTAL**

- Operating temperature : -20 to +60°C (Derate linearly 2.5% per °C from 41 to 60°C)  
(Derate linearly 1.0% per °C from -1 to -20°C)
- Storage temperature : -20°C to +85°C
- Humidity: 10% ~ 90%.
- MTBF : > 140,000 hours at full load and 25°C ambient temperature

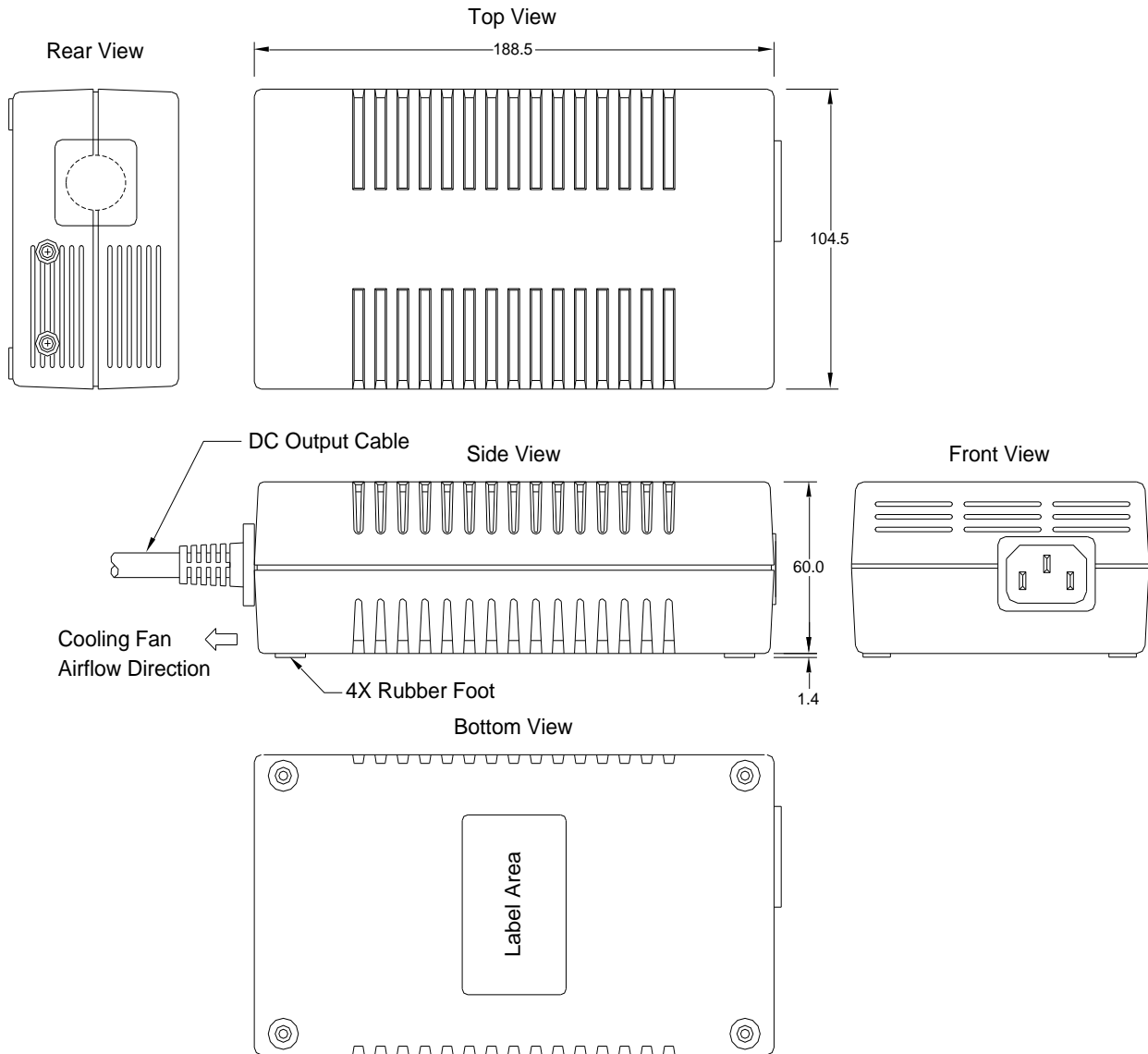
**DC OUTPUT & FEATURES**

Model	Output Rating		Po	O/P Regulation	Ripple & Noise(Vp-p)	Efficiency Level
PW-250A4-1Y120E	12V	20.83A	250W	±5%	240mV	VI
PW-250A4-1Y160E	16V	15.63A	250W	±5%	300mV	VI
PW-250A4-1Y190E	19V	13.16A	250W	±5%	300mV	VI
PW-250A4-1Y200E	20V	12.5A	250W	±5%	300mV	VI
PW-250A4-1Y240E	24V	10.42A	250W	±5%	300mV	VI
PW-250A4-1Y360E	36V	6.94A	250W	±5%	300mV	VI
PW-250A4-1Y480E	48V	5.21A	250W	±5%	300mV	VI

- Note:**
1. Ripple and noise are measured at oscilloscope 20MHz bandwidth by a 10uF electrolytic capacitor and a 0.1uF ceramic capacitor in parallel at output connector.
  2. -20 to -10°C output characteristics Output regulation are ±6% for 36V



**MECHANICAL SPECIFICATION**



- Note:
1. AC Inlet : IEC320-C14
  2. Plastic Case Color : Black
  3. Tolerance :  $\pm 0.5\text{mm}$
  4. Unit : mm



**POWER-WIN TECHNOLOGY CORP.**

5F-6, No. 79, Sec. 1, Hsin-Tai 5th Road, Shi-Chi, New Taipei City, 22101 Taiwan, R.O.C.

Tel : 886-2-26983989(Rep) Fax : 886-2-26983978

http : //www.power-win.com

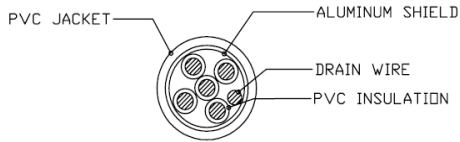
E-Mail : sales@power-win.com

REV. 3.4

**MECHANICAL SPECIFICATION**

**MATCHING CONNECTORS**

**DC output cable: 5C+1,UL2464, 16AWG, VW-1, 80°C,300V**



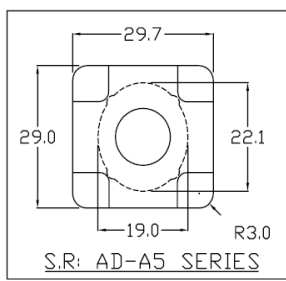
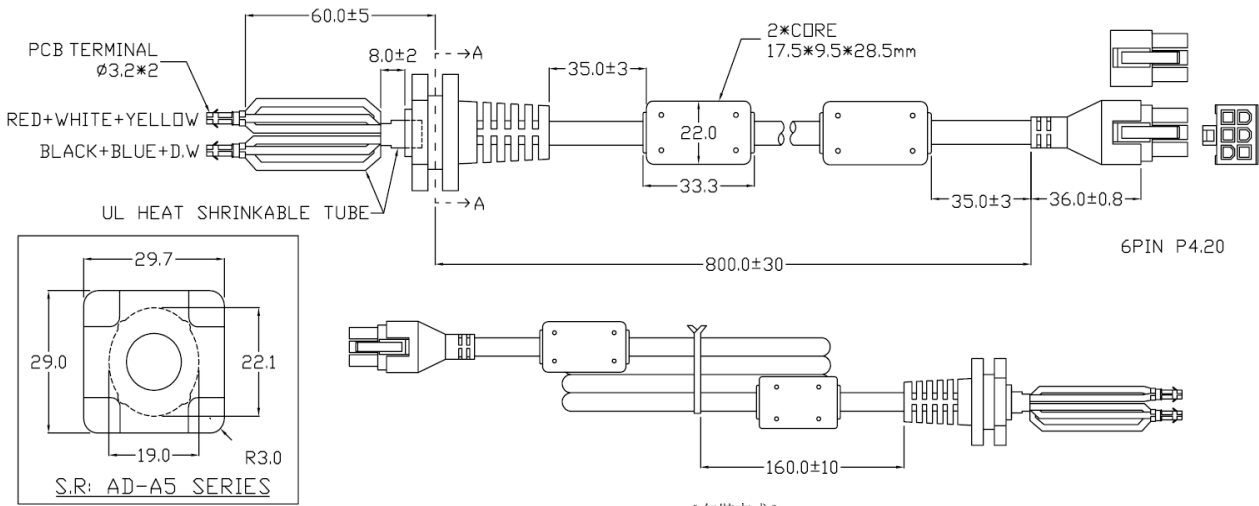
[2464#16AWG 5C+1(16AWG)]  
SECTIONAL DRAWING

- 1.BLUE (GND)
- 2.BLACK (GND)
- 3.D.W (GND)



- 4.RED (+V)
- 5.WHITE (+V)
- 6.YELLOW (+V)

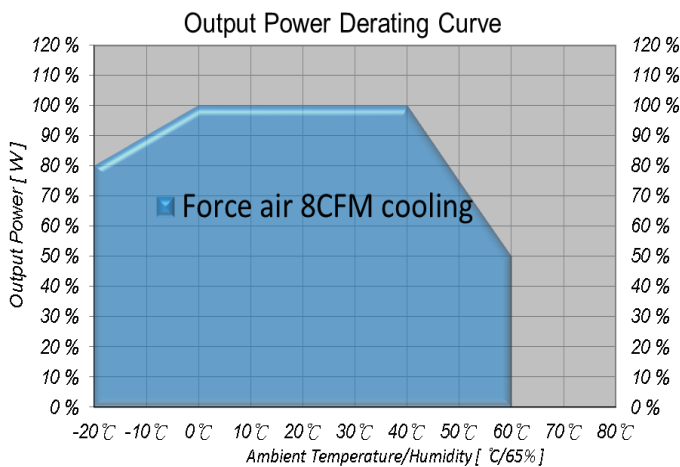
FRONT VIEW  
6P DIN



SECTION A-A

[包裝方式]

**Derating Curve**



**POWER-WIN TECHNOLOGY CORP.**

5F-6, No. 79, Sec. 1, Hsin-Tai 5th Road, Shi-Chi, New Taipei City, 22101 Taiwan, R.O.C.

Tel : 886-2-26983989(Rep) Fax : 886-2-26983978

http : //www.power-win.com

E-Mail : sales@power-win.com

REV. 3.4