

FEATURES

- Medical 60601-1 3.1rd Edition approval
- 3-pin IEC320-C14 or C6 Class I and 2-pin IEC320-C18 or C8 Class II models available
- Medical safety approved (2x MOPP between primary to secondary)
Suitable for BF application with appropriate system consideration.
- Altitude during operation: Medical up to 5000m.
- Touch current less than 100uA
- Rectangular plastic case with IP42 level
- 3 year warranty

ELECTRICAL SPECIFICATIONS

- Input range : 90 - 264VAC
- Frequency : 47 - 63Hz
- Power Factor : > 0.95 @115VAC; > 0.90 @230VAC @full load
- Inrush current : < 50A peak @115VAC; < 100A peak @230VAC cold start @25°C
- Input current (rms) : 2.5A @115VAC; 1.3A @230VAC max.
- Efficiency : > 89% @Average efficiency, 115/230VAC
- Maximum output power (Po) : 170/175watts
- Hold-up time : > 10ms typical @full load, 115VAC
- Short Circuit Protection: Auto-recovery
- Over Load Protection: Auto-recovery
- Over Voltage Protection: Latch off, AC recycle

ENVIRONMENTAL

- Operating temperature : -20 to +60°C (Refer to derating curve)
- Storage temperature : -20°C to +85°C
- Operating Humidity: 10% ~ 95% non-condensing
- Storage Humidity: 0% ~ 95% non-condensing
- MTBF : > 400,000 hours at full load and 25°C ambient temperature based on Bellcore TR-332

DC OUTPUT & FEATURES

Model	Output Rating		Po	O/P Regulation	Ripple & Noise(Vp-p)	DOE Efficiency	EU ErP
PW-M170A2-1Y120HZ	12V	14.17A	170W	±5%	120mV	VI	Tier 2
PW-M175A2-1Y150HZ	15V	11.67A	175W	±5%	120mV	VI	Tier 2
PW-M175A2-1Y190HZ	19V	9.22A	175W	±5%	150mV	VI	Tier 2
PW-M175A2-1Y240HZ	24V	7.30A	175W	±3%	150mV	VI	Tier 2
PW-M175A2-1Y280HZ	28V	6.25A	175W	±3%	150mV	VI	Tier 2
PW-M175A2-1Y360HZ	36V	4.87A	175W	±3%	200mV	VI	Tier 2
PW-M175A2-1Y480HZ	48V	3.65A	175W	±3%	200mV	VI	Tier 2
PW-M175A2-1Y540HZ	54V	3.25A	175W	±3%	200mV	VI	Tier 2

- Note:**
1. Ripple and noise are measured at oscilloscope 20MHz bandwidth by a 10uF electrolytic capacitor and a 0.1uF ceramic capacitor in parallel at output connector.
 2. AC Inlet Z=1 : Class I, IEC320-C14, Z=2 : Class I, IEC320-C6, Z=3 : Class II, IEC320-C18, Z=4 : Class II, IEC320-C8
 3. The switching frequency of this series is set within 65 to 90KHz at full load.



RoHS Compliant

Dimension : L170 x W85 x H44 mm (6.69" x 3.35" x 1.73")
Weight : 0.79 kgs (1.73 lbs.)

SAFETY STANDARDS

UL/cUL 60601-1 3.1rd Edition
TUV EN60601-1 3.1rd Edition
CB IEC60601-1 3.1rd Edition

EMC STANDARDS

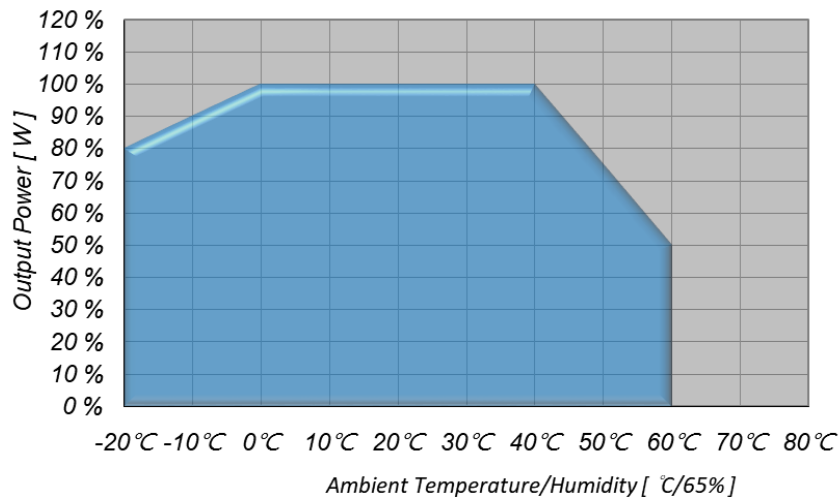
EN60601-1-2 Ed4:2015
IEC60601-1-2 Ed4:2014
EN 55011 Class B
FCC Part 18 Class B
CE

Class II versions exclusive:

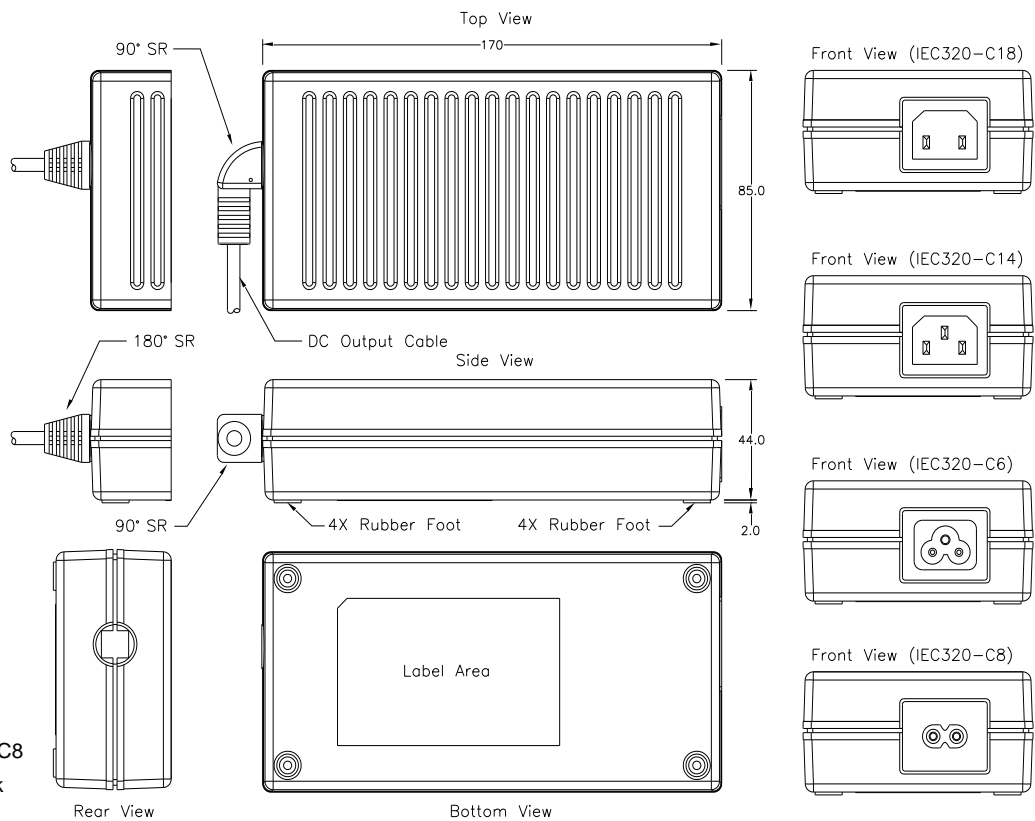
EN60601-1-11 1ST Edition
IEC60601-1-11 1ST Edition



AC/DC Switching Adapter - Single Output



MECHANICAL SPECIFICATION



Note:

1. AC Inlet : IEC320-C14, C18, C6 or C8
2. Plastic Case Color : Black
3. Tolerance : ± 0.5mm
4. Unit : mm

STANDARD OUTPUT CABLE

1. AWM 2464 # 16 AWG / 3C + SHIELDING, UL 80°C 300V VW-1, 1050 mm. (12V, 15V & 19V)
2. AWM 2464 # 18 AWG / 3C + SHIELDING, UL 80°C 300V VW-1, 1050 mm. (24V, 28V, 36V, 48V & 54V)
3. Depends on customers requirements.



POWER-WIN TECHNOLOGY CORP.

5F-6, No. 79, Sec. 1, Hsin-Tai 5th Road, Shi-Chi, New Taipei City, 22101 Taiwan, R.O.C.

Tel : 886-2-26983989(Rep) Fax : 886-2-26983978

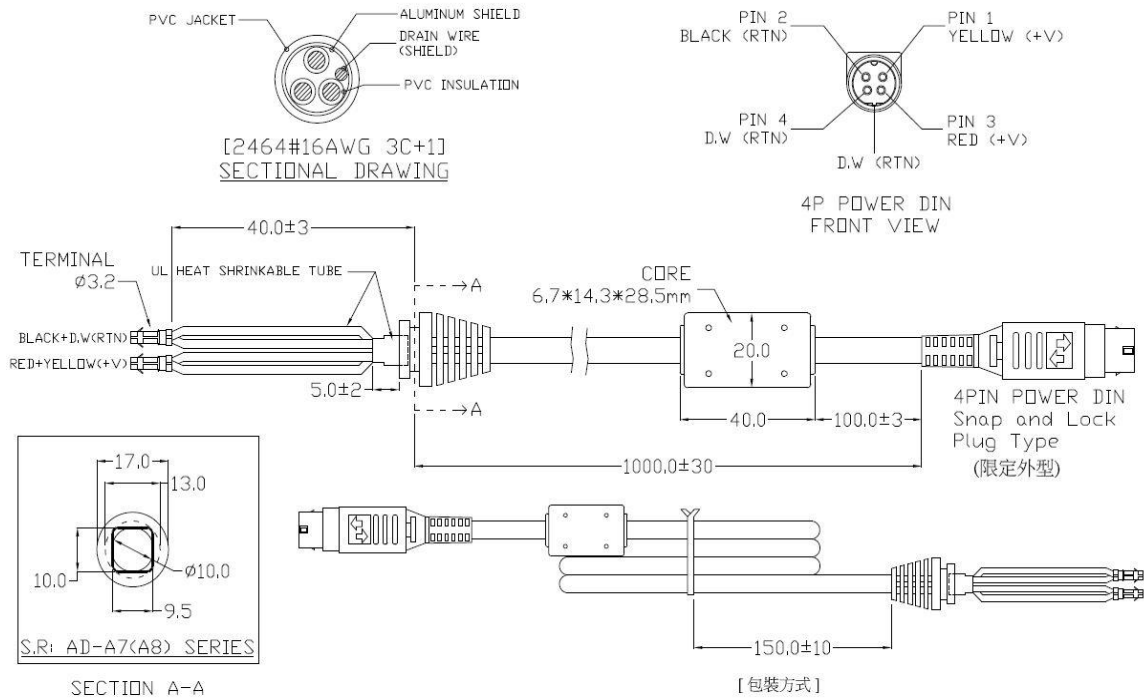
http : //www.power-win.com

E-Mail : sales@power-win.com

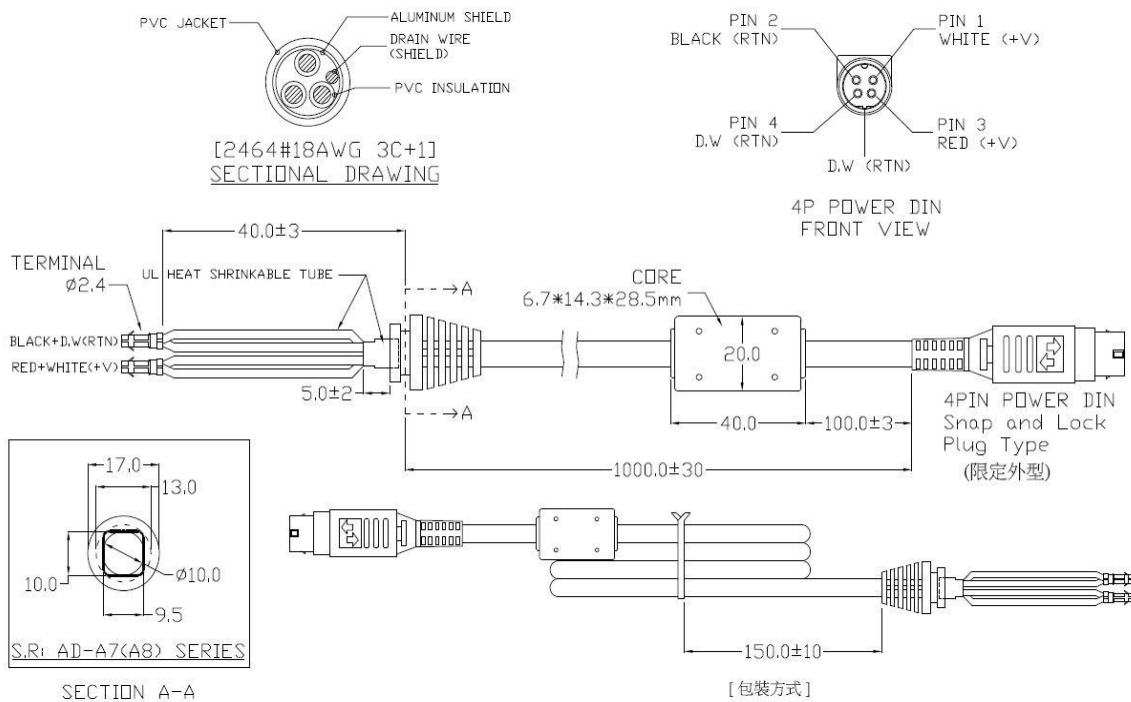
REV. 1.1

AC/DC Switching Adapter - Single Output

Standard Output Cord for 12V~19V D1207A



Standard Output Cord for 24V~54V D1208A



POWER-WIN TECHNOLOGY CORP.

5F-6, No. 79, Sec. 1, Hsin-Tai 5th Road, Shi-Chi, New Taipei City, 22101 Taiwan, R.O.C.

Tel : 886-2-26983989(Rep) Fax : 886-2-26983978

http : //www.power-win.com

E-Mail : sales@power-win.com

REV. 1.1